



Making Space for Nature in Kent and Medway

Developing the County's Local Nature Recovery Strategy

Pressures and Priorities Workshops January-February 2024

What you need to know

If you're short on time, you just need to read this page!

This first series of workshops aims to:

- Identify the pressures, threats and challenges that the LNRS will be addressing.
- Identify all the nature recovery outcomes the county wants to see.
- Provide you with the opportunity to view and input to other developing aspects of the project.

The programme for each workshop will be the same:

10.00am – Registration and refreshments

10.30am – Welcome and introductions

10.40am-12.00pm – Pressures for Kent and Medway's nature

12.00-1.30pm – lunch and networking and opportunity to view emerging project outputs

1.30pm – Priorities for Kent and Medway's nature

3.00pm - feedback and next steps

3.30pm – workshop close

There will be five workshops, held at various locations around the county:

- 30th January – Chilham Village Hall, Chilham
- 1st February – Kent Invicta Chamber of Commerce, Ashford
- 6th February – Riverside Country Park, Gillingham
- 8th February – Shorne Country Park, Gravesend
- 20th February – NIAB, West Malling

You can attend any location, regardless of where in the county your work or interests may be focused. You are welcome to attend just the morning or afternoon session, if you are unable to make the whole day.

To register, go to [Events](#) and select the date you wish to attend.

If you'd like to understand more about the project, the detail of the workshops and how their outcomes will be used, please read on – but you don't need to read this in order to take part in the workshops.

Introduction to Making Space for Nature in Kent and Medway

Making Space for Nature will work with partners and stakeholders to collaboratively developing the Local Nature Recovery Strategy for Kent & Medway (LNRS). These strategies have been created as a result of the 2021 Environment Act, with 48 to be created across England with no gaps or overlaps. Developed at a landscape by the Responsible Authority (with Kent County Council taking on this role for Kent and Medway), the LNRS will agree the local priorities and associated actions for nature recovery and wider environmental benefits, that collectively will deliver a nature recovery network for England, ending the decline of nature and supporting its recovery.

Making Space for Nature will develop:

- Spatially framed strategy for nature – focussing action to where its most needed and/or where it will deliver the greatest benefits.
- Framework for joined-up action, developed with those that will be instrumental in its delivery.
- Set of agreed priorities for nature recovery, with measures to deliver.
- Shared vision for nature recovery and the use of nature-based solutions in Kent and Medway.
- Ambitious but realistic and deliverable plan, linked to supporting mechanisms and finance.

More detail on the project can be found on the Making Space for Nature website. Online, you can also view recordings of the recent project briefings – if you're not familiar with the project, it is recommended that you view these as there will not be an introduction to the project on the day of the workshop.

[Making Space For Nature Kent](#)

[Making Space for Nature Video Webinars and Presentations](#)

Introduction to the workshops

This first series of workshops brings everyone together at the very start of the LNRS development process, giving all the opportunity to influence and inform it from the word go.

The first matter we want to determine is why are we are developing a strategy for nature recovery in Kent and Medway and, specifically, what are the key issues – the current, and future, pressures, threats and challenges – that the LNRS needs to consider in setting its priorities for nature recovery.

The second is to understand what these priorities might be – what are the outcomes the county would like to see for nature. In this workshop we will create a long list – as wish list if you like – that will be informed by the pressures identified.

During the course of the day there will also be opportunities to give us your thoughts on other aspects of the strategy that are in development, such as a working vision, the value of

Kent's nature and the identification of areas of Kent you consider important to the future of the county's wildlife.

There will also be the draft "Areas of Particular Importance to Biodiversity" map (our first completed milestone of the development process) available for you to view.

In addition, we will have staff on hand to demonstrate our "action for nature" mapping app and assist you to input your information. This mapping activity will allow the project to assess what action has already been undertaken, so that we can identify opportunities to build on and/or extend this action.

The aims of this first series of workshops are to:

- Establish the foundations of our partnership approach and develop the relationships that will enable this.
- Give you the opportunity to be part of the LNRS development from the outset.
- Identify the pressures, threats and challenges that the LNRS will be addressing.
- Identify all the outcomes for nature the county wants to see – where stakeholders want to get to in terms of Kent's nature.
- Provide the opportunity for you to view and input to other developing aspects of the project.

How will we use the workshop outcomes

All identified pressures and outcomes will be collated into a workshop report, to ensure that there is a public record of the full findings. There will then be some analysis undertaken to refine this.

Pressures

The pressures identified by through the workshops, and other engagement activities of the project, will be collated and to understand the key pressures for the county and for specific habitats and/or species. This work will also consider what role the LNRS could have in addressing the pressure:

- Manage – if LNRS can directly stop, prevent or avoid pressure or threat (for example, unfavourable management of, and damage to, ancient woodland).
- Influence – if LNRS can minimise the impact of the pressure or threat (for example damage to chalk streams from abstraction).
- Mitigate – if the LNRS can counter or enable adaption to the impact of the pressure or threat (for example, climate change).
- Out of scope – no opportunity for LNRS to address pressure (for example, lack of conservation grazer contractors).

The pressures identified will not only be used to help develop our priorities shortlist but will also inform the pressures section in the required strategy area description.

Priorities

Firstly, the outcomes will be sifted to remove any that sit outside of scope of LNRS; this will relate to any which:

- does not contribute to national environmental objectives.
- or does not address a pressure identified for the strategy area.
- relates to a co-benefit rather than habitat or species (e.g. specific access priority).
- relates to specific site/location/area (unless it can be amended to a more general outcome).
- cannot be delivered by LNRS (e.g. stop water pollution).

The remaining outcomes in the long list will then be combined where possible to create a shorter, more condensed long-list.

The long-list will undergo a process of refinement, using a shortlisting assessment – this will turn the outcomes into a priorities shortlist. A draft shortlisting assessment will be published in February so stakeholders can comment on its appropriateness, before it is applied.

A priorities shortlisting report will be produced and published, to ensure the shortlisting approach is fully transparent. This report will aim to state why an outcome has or has not met the criteria for shortlisting and, where not, if there are circumstances/conditions that could/would make it an LNRS priority in the future. This report will be retained and considered as part of the first LNRS review period.

The priorities shortlist will be the focus for the next set of workshops, to be held in May, where the shortlist will be reviewed and (hopefully) endorsed; and the associated potential measures, the actions required to deliver these priorities, will be identified. See overleaf for more detail on the LNRS process and how you can influence.

Preparing for the workshop

To assist you in preparing for the workshop, we include overleaf some example pressures and priorities identified by the pilot Local Nature Recovery Strategies – this hopefully will give you some idea of what we're seeking to identify for Kent from this first series of workshops.

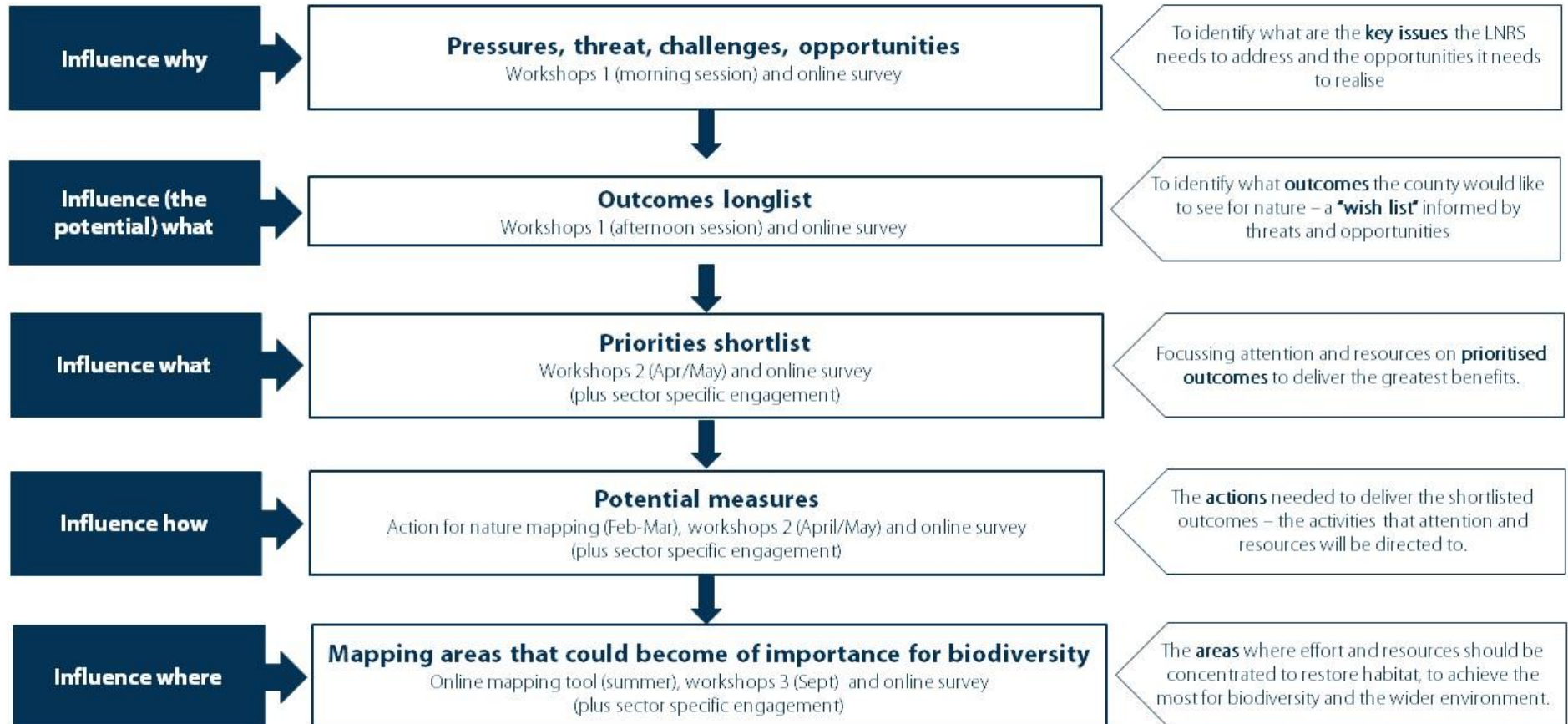
If possible, we ask you to discuss with colleagues and partners who may not be attending their views on the pressures and outcomes for Kent, so you can represent the views of your organisation and/or sector.

If you have any supporting information or evidence for the pressures and outcomes you intend to put forward, we would be very grateful to be provided with references for this work – please pass these to members of the MS4N team.

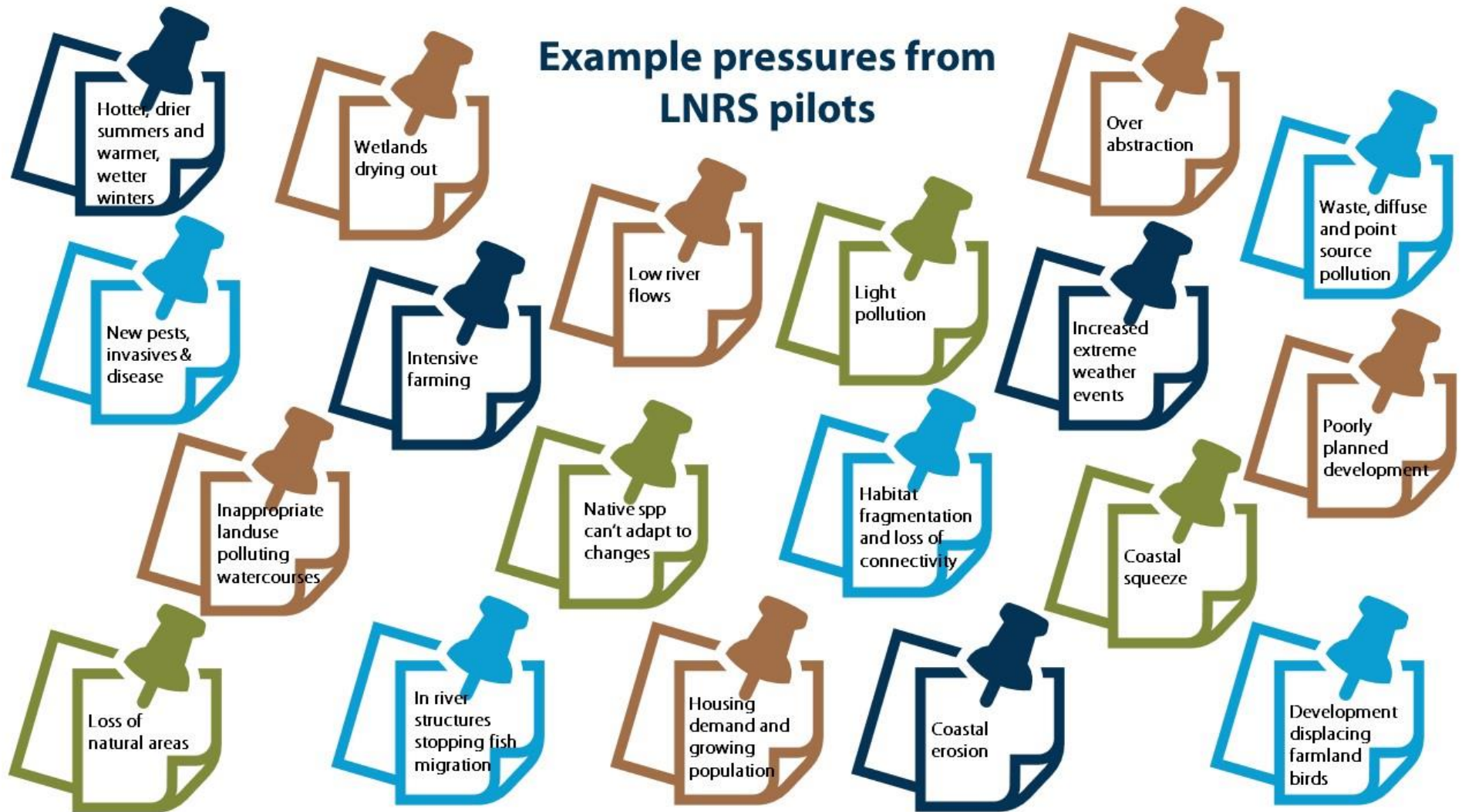
All discussions on the day will be facilitated by a member of the MS4N team, who will also have to hand maps and notes to aid the conversations.

If you have any questions in advance of the workshops, please contact makingspacefornature@kent.gov.uk

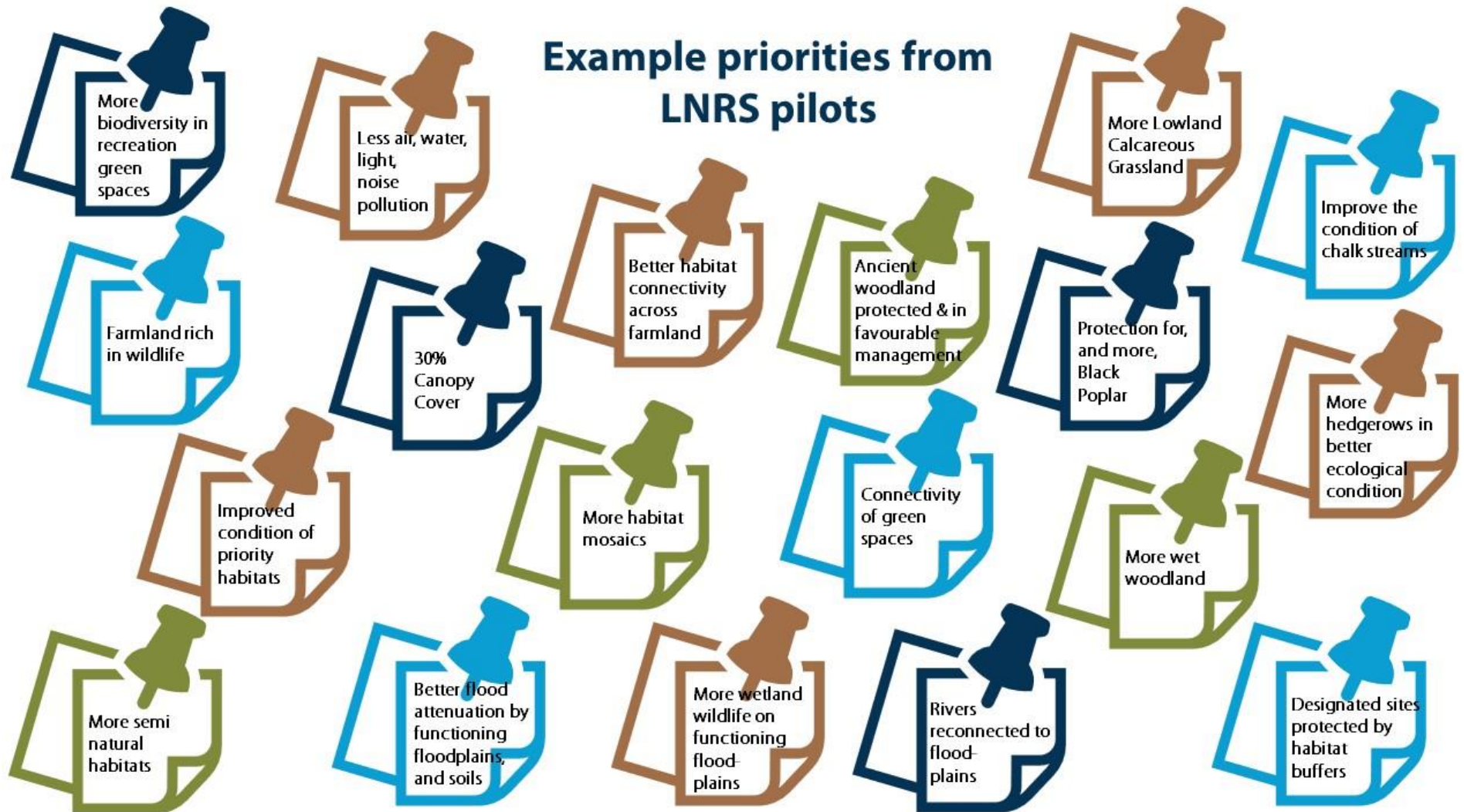
How to influence the LNRS



Example pressures from LNRS pilots



Example priorities from LNRS pilots



Detailed workshop programme

10.00am – Registration and refreshments

10.30am – Welcome to workshop and purpose of the day.

10.40am – Introduction to first workshop session.

10.45am-12.00pm – Pressures for Kent and Medway's nature

Stakeholders will be asked to identify what the pressures, threats and challenges face nature in Kent and Medway, grouping them under the following themes:

- a) Agriculture and forestry practices
- b) Development, energy production and transport systems
- c) Climate change, geological events, natural processes and catastrophes.
- d) Human intrusion and disturbance
- e) Alien and problematic species.
- f) Pollution
- g) Extraction of resources

Stakeholders will also be asked to consider whether the pressure is particularly relevant to a specific habitat, species, national character area or area of the county.

12.00-1.30pm – lunch and networking

During the lunch break there will be the opportunity for stakeholders to:

- Get assistance with inputting to the "action for nature" mapping tool.
- View the draft "Areas of Particular Importance to Biodiversity" (APIB) map.
- Identify other areas of local significance for Kent and Medway's nature not identified by the APIB map.
- Feedback on the working vision.
- Tell us what is significant about Kent's natural environment.
- Contribute to our what makes Kent's nature so special word cloud.

1.30pm - introduction to second workshop session

1.40pm – Priorities for Kent and Medway's nature

Stakeholders will be asked to identify what outcomes they would like to see for nature recovery. Essentially where we want to get to in respect of the county's habitats and species. It is through the shortlisting of outcomes that we will identify the LNRS priorities.

At this stage of the strategy's development, we are not looking at delivery – we want the what, not the how.

Stakeholders will be asked to relate the outcomes to the pressure they are responding to (based on above themes). Stakeholders should also consider whether the outcome is habitat or species based or if instead it relates to wider environmental goals or nature-based solutions.

Any outcomes that relate to co-benefits, such as improved access, or health and wellbeing, will be parked and considered at a later stage.

3.00pm - feedback and next steps

Each breakout group to report back on their top two/three priorities.

3.30pm – workshop close

The "action for nature" mapping support and other project outputs will remain available until 4pm.