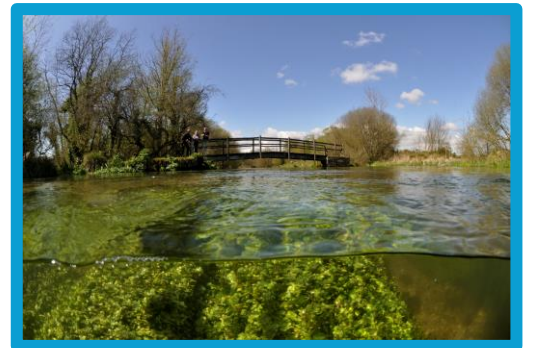




Developing the County's Local Nature Recovery Strategy

LNRS Priorities Shortlist self-led workshop



Making Space for Nature in Kent and Medway

- Spatially framed strategy for nature – focussing action to where its most needed and will deliver the greatest benefits.
- Framework for joined-up action, developed with those that will be instrumental in its delivery.
- Set of agreed **priorities** for nature recovery, with measures to deliver.
- Shared vision for nature recovery and the use of nature-based solutions in Kent and Medway.
- Ambitious but realistic and deliverable plan, linked to supporting mechanisms and finance.

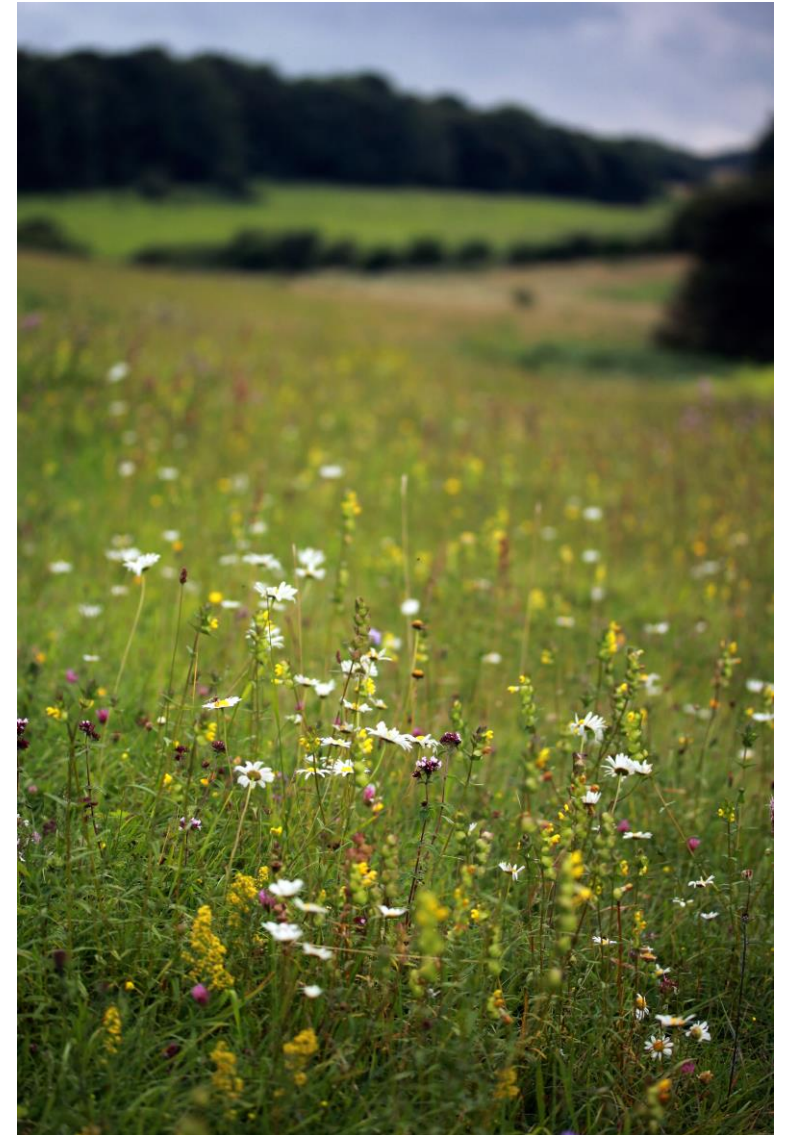


What is a priority in the LNRS?

- The **end result** that the strategy is seeking to achieve.
- What the county thinks we should **focus** on to deliver nature recovery in Kent & Medway.
- Based on **habitats or species** – additional benefits can be associated but should not be the priority.
- Provide the **framework** for action – potential measures to be developed for each priority.
- Should be what is **most needed** and what will deliver the **greatest benefit**.



[LNRS draft priority shortlist](#)



**Making Space
for Nature**
in Kent and Medway

What gets shortlisted?

In scope:

- Contributes to a National Environmental Objective
- (and/or) Addresses a pressure or opportunity for strategy area.
- Relates to a habitat or species.
- Is not site specific.



[Shortlisting approach](#)



What gets shortlisted?

Meets qualifying criteria in consideration of:

- Local and national significance.
- Contribution to national targets.
- Urgency.
- Climate change impacts.
- Maximising benefits – nature based solutions.



[Shortlisting approach](#)



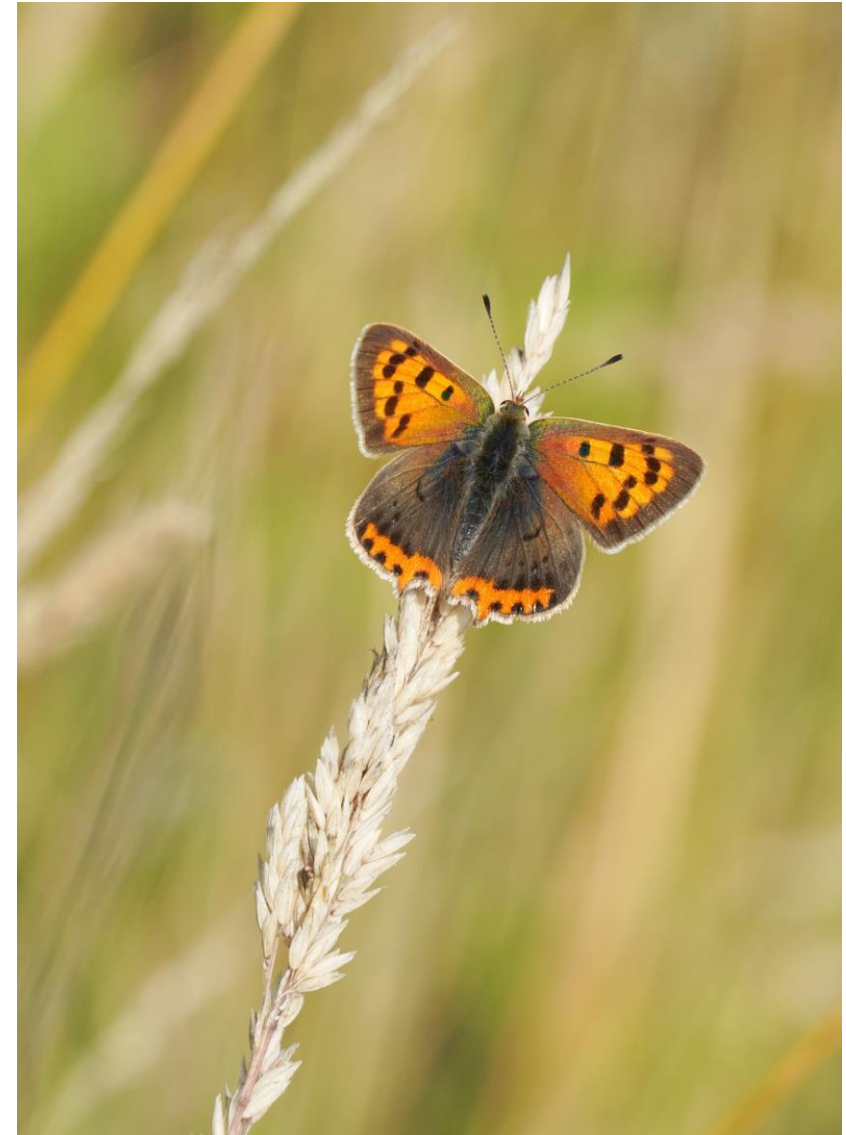
**Making Space
for Nature**
in Kent and Medway

Where are the species priorities?

- Species priorities to be identified following a Natural England guided process.
- Similar approach of creating longlist and refining this down against criteria to provide focussed shortlist.
- Will be based on individual species and groups, based on habitat assemblages.
- KMBRC leading work, under steer of 35+ of the county's species experts (Species Recovery Technical Advisory Group).



[More information on identification of species priorities](#)



Creating the priority shortlist



[Detailed process report](#)

January/February workshops & other engagement activities – 800+

Priorities long list – 243 priorities

Exclude any out of scope and “park” species priorities – 133 priorities

Assess against shortlisting criteria – 96 priorities

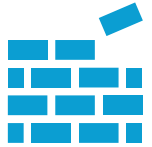
Review and refine to create first draft – 61 priorities

Board and Delivery Group review to finalise – 69 priorities

Aims of priorities shortlist workshop



- Determine whether the draft priorities shortlist focuses on what is most needed to recover nature and address the challenges facing our natural environment.



- Identify additional priorities needed to strengthen the LNRS.



- Identify anything within the shortlisted considered not a priority for nature.



- Identify where there may be opportunities to refine the shortlist further, so that it is focussing on the most important and urgent needs of the county's nature/

Session 1 – will the priorities deliver what's needed?

- a) Are we suitably covering all habitats that are a priority for action in the county?
- b) Are all the pressures identified by stakeholders sufficiently addressed by the shortlist?
- c) Is there anything missing? Any proposals for additional priorities?
- d) Are any of the priorities unrealistic or unachievable?
- e) Is there anything considered not a priority?



[LNRS draft priority shortlist](#)
[Strategy area pressures](#)

What should a priority do?

- ✓ Focus on what's most needed.
- ✓ Deliver the greatest benefit.
- ✓ Illustrate the end result – the what not the how.
- ✓ Be habitat or species based.
- ✓ Address a pressure.

a) Are we suitably covering all habitats that are a priority for action in the county?

- Chalk grassland
- Grazing marsh
- Lowland meadow
- Acid grassland
- Heathland
- Ancient woodland
- Wet woodland
- Mixed broadleaved woodland
- Beech and Yew woodland
- Chalk streams
- Ponds
- Rivers
- Lowland mires
- Reedbed
- Saltmarsh
- Mudflat
- Saline lagoons
- Vegetated shingle
- Open mosaic habitat on previously developed land
- Hedgerow
- Traditional orchard



Habitats not adequately covered by shortlisted priorities

- Note here any habitats that you consider have not been sufficiently addressed by the current priorities shortlist.
- Are you able to propose priorities that would address what's needed for this habitat?

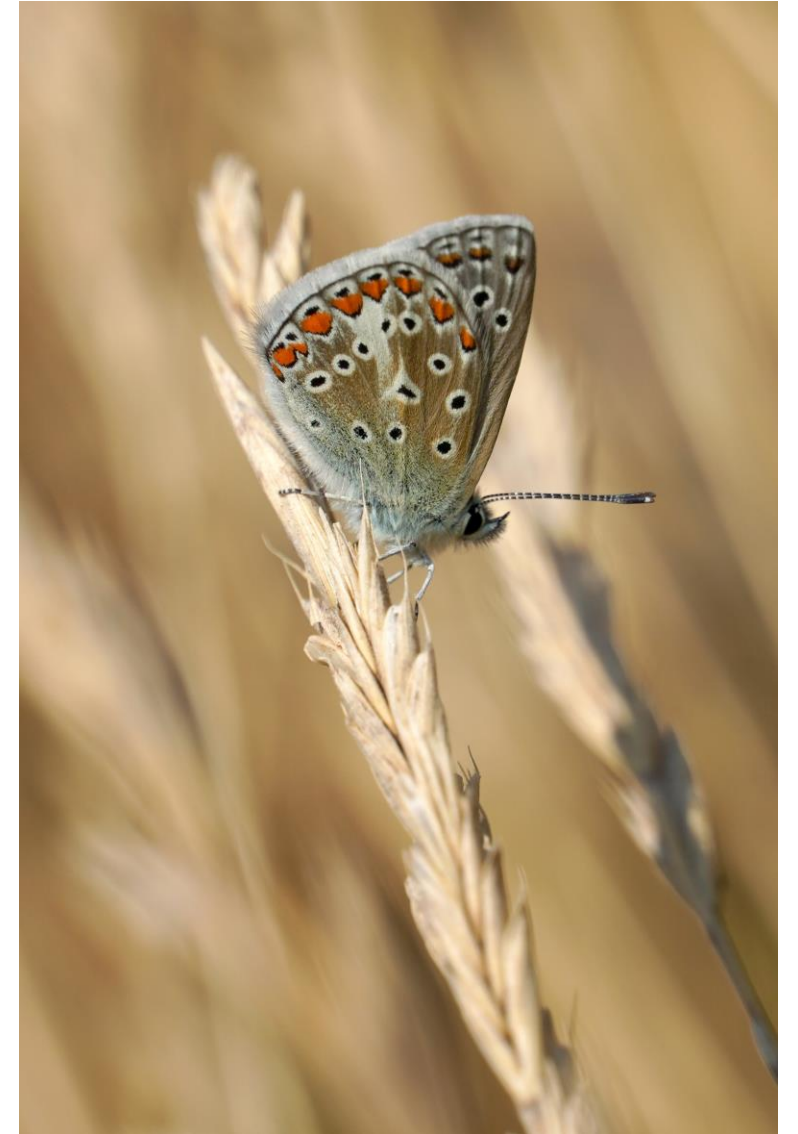
b) Are all the pressures identified by stakeholders sufficiently addressed by the shortlist?

- Climate change
- Pollution
- Water use
- Human intrusions
- Built environment and infrastructure
- Land use for food production
- Extraction of resources
- Alien and problematic species

(see pressures list for detailed pressures)



[Strategy area pressures](#)



**Making Space
for Nature**
in Kent and Medway

Pressures not adequately covered by shortlisted priorities

- Note here any pressures or challenges for nature that you consider have not been sufficiently addressed by the current priorities shortlist.
- Are you able to propose priorities that would tackle this?

Unrealistic or unachievable priorities

- Note here any priorities that you consider are not realistic or achievable, and why.

Priorities that shouldn't be on the shortlist

- Note here any priorities that you should not be included on the shortlist, and why.

Session 2 – refining the shortlist

Identifying from the draft priorities, those which:

- a) Must remain.
- b) Are required but could be tackled at a later stage and therefore could be removed for this iteration.
- c) May not be achievable or deliverable and could divert focus and resources away from other priorities.

What's a shortlist?

- ✓ Manageable.
- ✓ Realistic.
- ✓ Deliverable.
- ✓ Focused.
- ✓ Target action to where it is most needed and will deliver the greatest benefit.

Session 2 – refining the shortlist

Ways to approach the task:

1. If a small group, through nomination and discussion, identify 10 priorities from the shortlist for both the “must remain” and “important but not urgent” categories. And identify up to 10 priorities that fall into the “potentially unachievable or undeliverable” category.
2. If a larger group, initially allow each person 10 votes per category and ask each person to assign their votes accordingly (one vote per priority and all votes to be used, except for those for “potentially unachievable or undeliverable” category. Once voting is over, tally up and then discuss – is everyone in agreement with the outcomes?

Please do not be concerned about the outcomes of your voting – this activity on its own will not lead to retention or removal of a priority. The purpose of this activity is to frame the discussion about potential opportunities to refine the shortlist further. Any further refinement will be done in consideration of a number of different things – feedback from the workshops will be just one of these considerations.

MUST REMAIN priorities

- A priority that is both **critical and urgent** to recovering Kent and Medway's nature.
- A priority that **must be tackled now** (within the next five years) as they have outcomes that directly affect us achieving our goals and long-term aspirations for nature recovery.
- Without action on this priority, there are clear and immediate **consequences**.

Note here any priorities that you consider are **MUST REMAIN** priorities.

IMPORTANT BUT NOT URGENT priorities

- A priority that is **important** to recovering Kent and Medway's nature but perhaps can be addressed over a longer **time period** (longer than within the next five years).
- A priority that will affect our goals and long-term aspirations for nature recovery but can be tackled at a later stage, **without consequence to our ambitions**.

Note here any priorities that you consider are **IMPORTANT BUT NOT URGENT** priorities.

POTENTIALLY UNACHIEVABLE OR UNDELIVERABLE priorities

- A priority that is **necessary** to recovering Kent and Medway's nature but **unlikely to be achievable or deliverable**.
- Because of **influences out of our control**, may in fact not be achievable or deliverable.
- Such influences may be climate change, the cost of action or the difficulty/impracticalities of the sorts of interventions required.
- Risk **diverting focus and resources away from other priorities** that can be achieved.

Note here any priorities that you consider are **POTENTIALLY UNACHIEVABLE OR UNDELIVERABLE** priorities.

**Thank you for taking part in our self-led
priorities shortlist workshop – please send your
workshop feedback to
makingspacefornature@kent.gov.uk**



**Any questions? Please email
makingspacefornature@kent.gov.uk**