

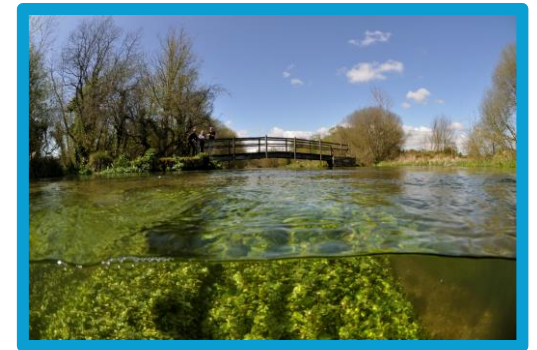


**Making Space  
for Nature  
in Kent and Medway**

Developing the County's Local Nature Recovery Strategy

# **LNRS Priorities Shortlist Workshop**

- 9.30am** **Priorities voting**
- 10.00am** **Welcome and introductions**
- 10.35am** **Workshop session 1 – will the priorities deliver nature recovery in Kent & Medway?**
- 11.30am** **Break**
- 12.00pm** **Workshop session 2 – refining the priority shortlist**
- 12.40pm** **Report back and workshop conclusions**
- 1.00pm** **Close**



All photos © Jim Higham

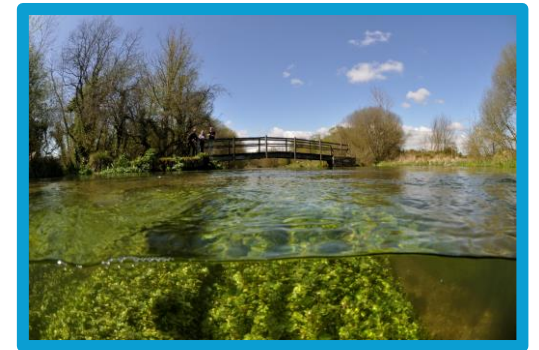


**Making Space  
for Nature  
in Kent and Medway**

Developing the County's Local Nature Recovery Strategy

# **LNRS Priorities Shortlist Workshop**

- 1.00pm**     **Priorities voting**
- 1.30pm**     **Welcome and introductions**
- 2.05pm**     **Workshop session 1 – will the priorities deliver nature recovery in Kent & Medway?**
- 3.00pm**     **Break**
- 3.30pm**     **Workshop session 2 – refining the priority shortlist**
- 4.10pm**     **Report back and workshop conclusions**
- 4.30pm**     **Close**



All photos © Jim Higham

# Making Space for Nature in Kent and Medway

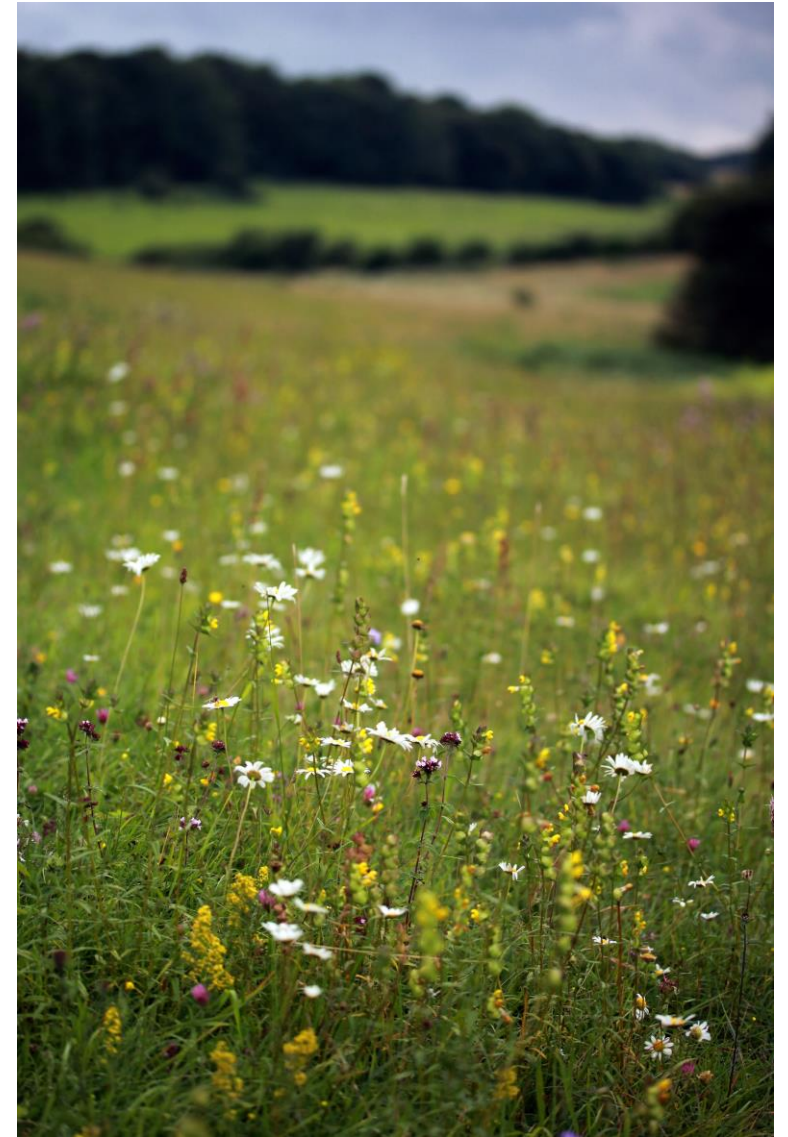
- Spatially framed strategy for nature – focussing action to where its most needed and will deliver the greatest benefits.
- Framework for joined-up action, developed with those that will be instrumental in its delivery.
- Set of agreed **priorities** for nature recovery, with measures to deliver.
- Shared vision for nature recovery and the use of nature-based solutions in Kent and Medway.
- Ambitious but realistic and deliverable plan, linked to supporting mechanisms and finance.





# What is a priority in the LNRS?

- The **end result** that the strategy is seeking to achieve.
- What the county thinks we should **focus** on to deliver nature recovery in Kent & Medway.
- Based on **habitats or species** – additional benefits can be associated but should not be the priority.
- Provide the **framework** for action – potential measures to be developed for each priority.
- Should be what is **most needed** and what will deliver the **greatest benefit**.



# What gets shortlisted?

## In scope:

- Contributes to a National Environmental Objective
- (and/or) Addresses a pressure or opportunity for strategy area.
- Relates to a habitat or species.
- Is not site specific.





# What gets shortlisted?

## Meets qualifying criteria in consideration of:

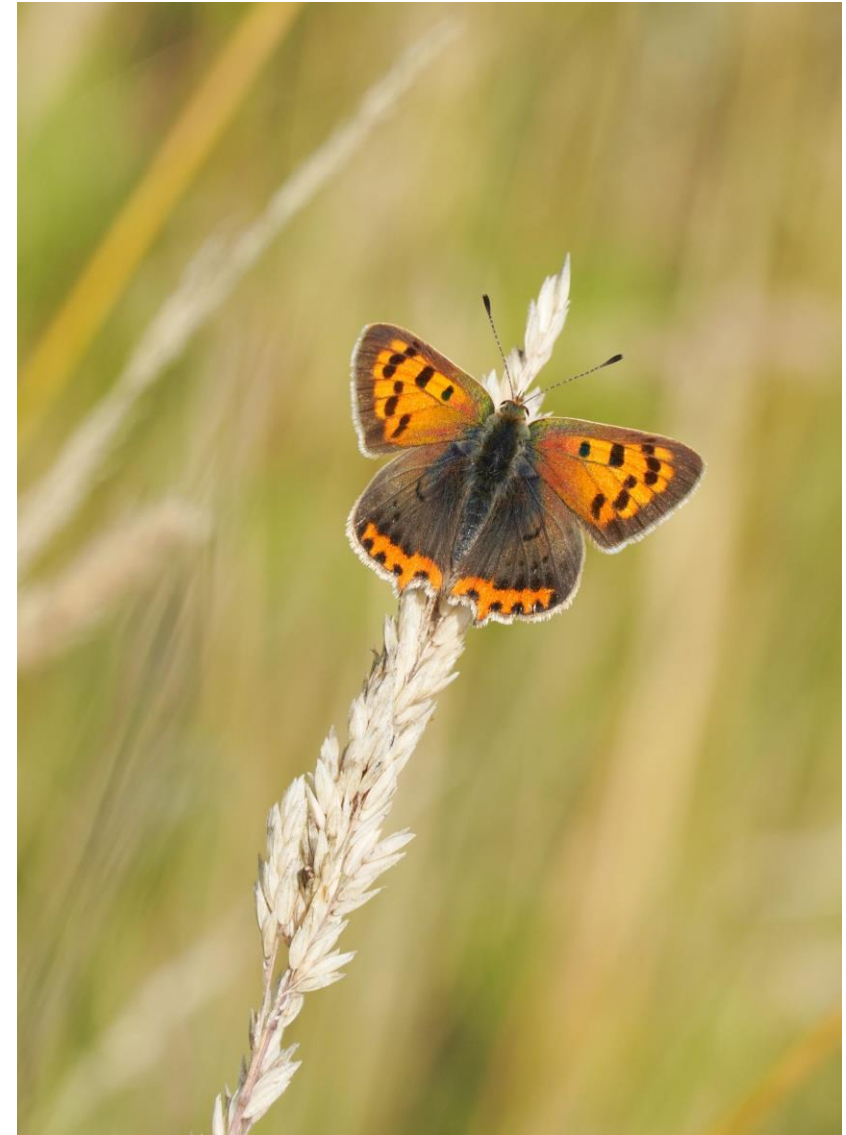
- Local and national significance.
- Contribution to national targets.
- Urgency.
- Climate change impacts.
- Maximising benefits – nature based solutions.



**Making Space  
for Nature**  
in Kent and Medway

# Where are the species priorities?

- Species priorities to be identified following a Natural England guided process.
- Similar approach of creating longlist and refining this down against criteria to provide focussed shortlist.
- Will be based on individual species and groups, based on habitat assemblages.
- KMBRC leading work, under steer of 35+ of the county's species experts (Species Recovery Technical Advisory Group).



# Creating the priority shortlist

January/February workshops & other engagement activities – 800+



Priorities long list – 243 priorities



Exclude any out of scope and “park” species priorities – 133 priorities



Assess against shortlisting criteria – 96 priorities



Review and refine to create first draft – 61 priorities



Board and Delivery Group review to finalise – 69 priorities



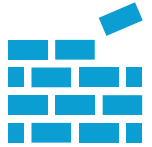


**Any questions?**

# Aims of priorities shortlist workshop



- Determine whether the draft priorities shortlist focuses on what is most needed to recover nature and address the challenges facing our natural environment.



- Identify additional priorities needed to strengthen the LNRS.



- Identify anything within the shortlisted considered not a priority for nature.



- Identify where there may be opportunities to refine the shortlist further, so that it is focussing on the most important and urgent needs of the county's nature/

# Session 1 – will the priorities deliver what's needed?

- Please try to sit on tables without your colleagues.
- Your feedback on whether the priorities focus on what is most needed to recover nature and address the challenges facing our natural environment.
- Facilitator will guide you through this review with a series of questions.





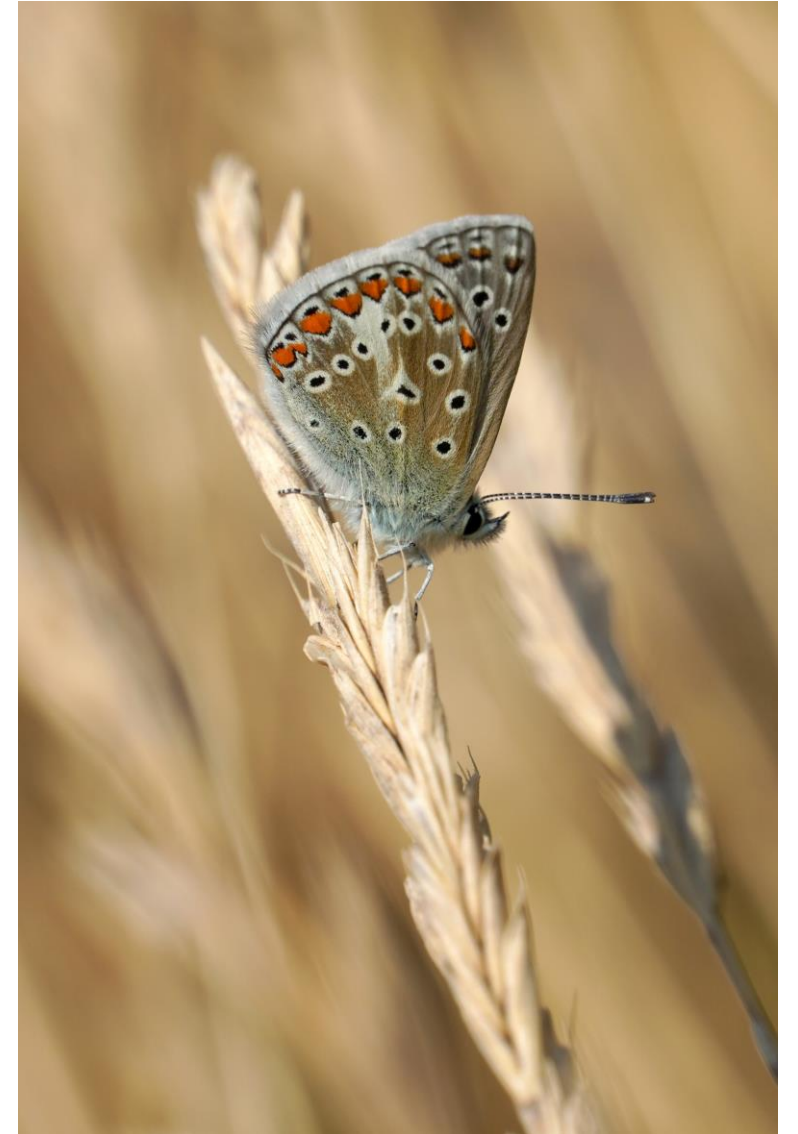
## a) Are we suitably covering all habitats that are a priority for action in the county?

- Chalk grassland
- Grazing marsh
- Lowland meadow
- Acid grassland
- Heathland
- Ancient woodland
- Wet woodland
- Mixed broadleaved woodland
- Beech and Yew woodland
- Chalk streams
- Ponds
- Rivers
- Lowland mires
- Reedbed
- Saltmarsh
- Mudflat
- Saline lagoons
- Vegetated shingle
- Open mosaic habitat on previously developed land
- Hedgerow
- Traditional orchard



## **b) Are all the pressures identified by stakeholders sufficiently addressed by the shortlist?**

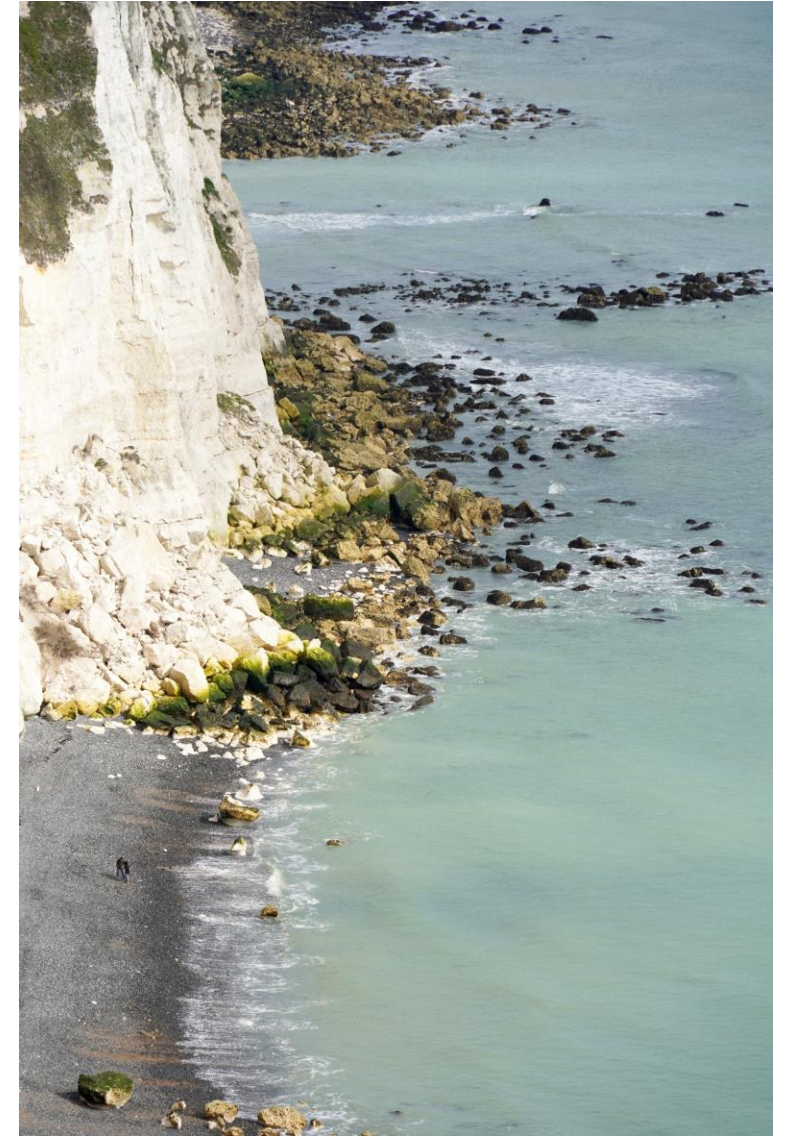
- Climate change
- Pollution
- Water use
- Human intrusions
- Built environment and infrastructure
- Land use for food production
- Extraction of resources
- Alien and problematic species



**c) Is there anything missing? Any proposals for additional priorities?**

**d) Are any of the priorities unrealistic or unachievable?**

**e) Is there anything considered not a priority?**





# Session 1 – will the priorities deliver what's needed?

Please try to sit on tables without your colleagues.

- a) Are we suitably covering all habitats that are a priority for action in the county?
- b) Are all the pressures identified by stakeholders sufficiently addressed by the shortlist?
- c) Is there anything missing? Any proposals for additional priorities?
- d) Are any of the priorities unrealistic or unachievable?
- e) Is there anything considered not a priority?

## What should a priority do?

- ✓ Focus on what's most needed.
- ✓ Deliver the greatest benefit.
- ✓ Illustrate the end result – the what not the how.
- ✓ Be habitat or species based.
- ✓ Address a pressure.

# Session 2 – refining the shortlist

Please try to sit on tables without your colleagues.

- a) Is there agreement with the priorities identified as “must remain”?
- b) Can any of the “important but not urgent” priorities wait?
- c) Any disagreement with the priorities identified as “potentially unachievable or undeliverable”?
- d) Should “potentially unachievable or undeliverable” priorities remain, or would it be best to focus on the priorities we can deliver against?

## What's a shortlist?

- ✓ Manageable.
- ✓ Realistic.
- ✓ Deliverable.
- ✓ Focused.
- ✓ Target action to where it is most needed and will deliver the greatest benefit.



**Any questions?**